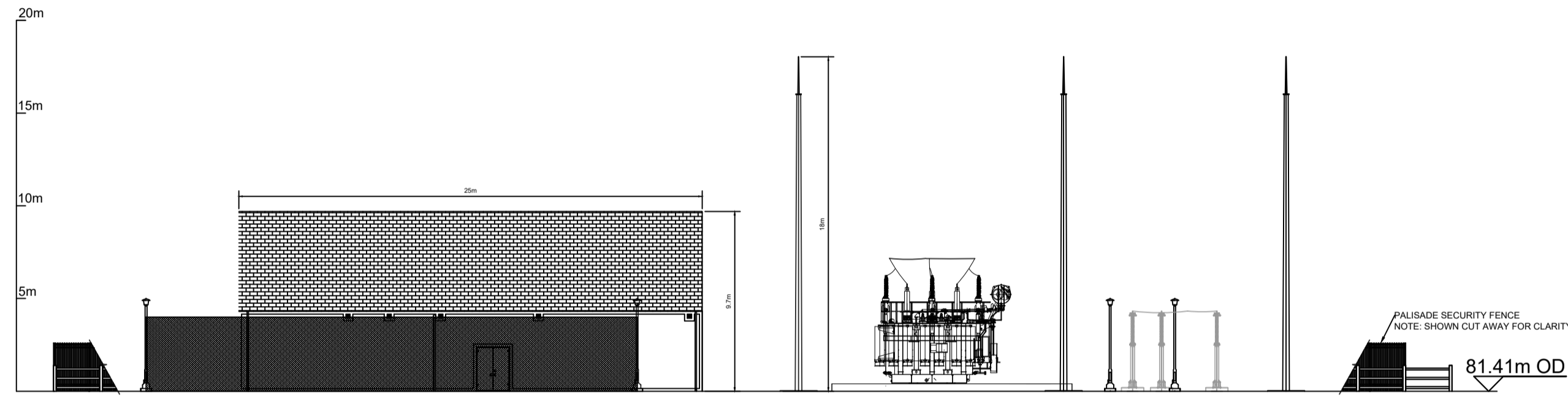
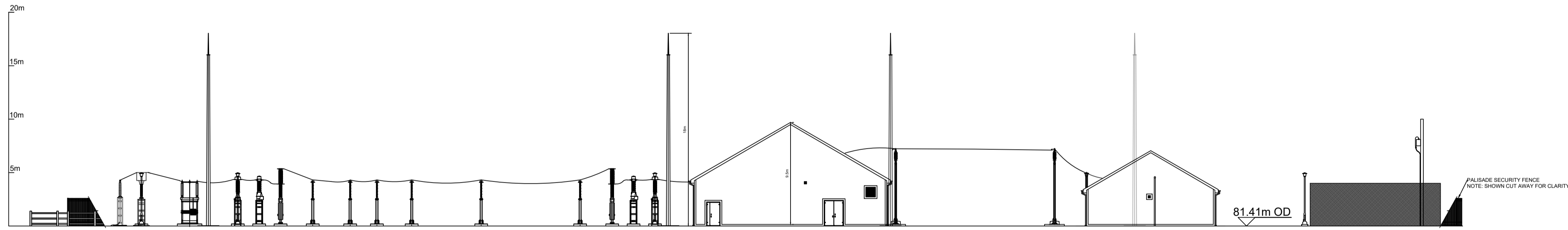


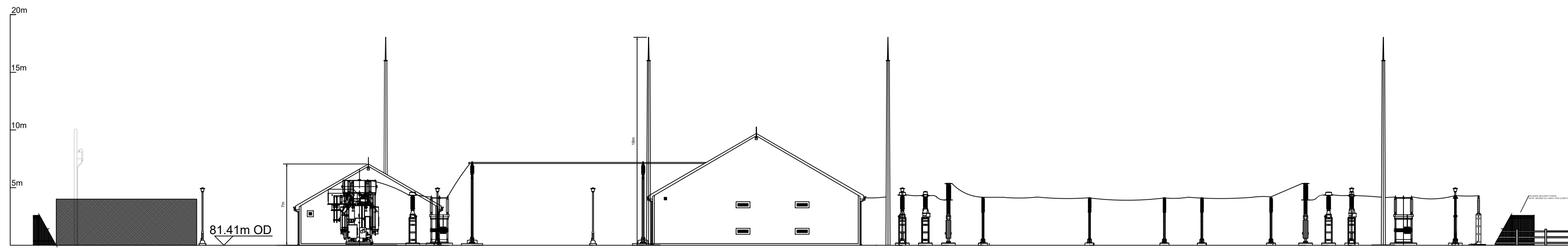
ELEVATION A - A



ELEVATION B - B



ELEVATION C - C



ELEVATION D - D

- NOTES:**
1. ALL DIMENSIONS NOTED ARE IN METRES
 2. DRAWING IS FOR PLANNING PURPOSES ONLY
 3. POSITION AND QUANTITIES OF LIGHTNING MASTS & LAMP POSTS ARE INDICATIVE AND SUBJECT TO CHANGE DURING DETAILED DESIGN PHASE
 4. POSITION OF 110 KV AIS EQUIPMENT IS SUBJECT TO CHANGE DURING DETAILED DESIGN PHASE
 5. RURAL SUPPLY POSITION INDICATIVE. FINAL POSITIONING TO BE AGREED WITH ESB NETWORKS.
 6. USE OF LINE TRAPS FOR OVERHEAD LINE CONNECTION IS TO BE CONFIRMED BY SYSTEM OPERATOR.

LEGEND:

ID	DESCRIPTION
BBPI	BUSBAR POST INSULATOR
BW	BORED WELL
CB	CIRCUIT BREAKER
CC	CABLE CHAIR
CCVT	CLOSED CIRCUIT TELEVISION
CT	CURRENT TRANSFORMER
CTVT	COMBINED CURRENT & VOLTAGE TRANSFORMER
DA	BUSBAR DISCONNECTOR
DB	BUSBAR DISCONNECTOR
DE	EARTH SWITCH
DEM	TRANSFORMER EARTH SWITCH
DS	DIESEL GENERATOR
DL	LINE DISCONNECTOR
DT	TRANSFORMER DISCONNECTOR
FHT	FOUL HOLDING TANK
HOT	HOUSE TRANSFORMER
IFK	INTERFACE KIOSK
LM	LIGHTNING MAST
LP	LAMP POST
LT	LAMP TRAP
NER	NETURAL EARTHING RESISTOR
NER CSE	NER CABLE SEALING END
OLG	OVERHEAD LINE GANTRY
PI	POST INSULATOR
RS	RURAL SUPPLY
SA	SURGE ARRESTER
TP	TELECOMMUNICATIONS POLE
VT	VOLTAGE TRANSFORMER

- NOTES:**
1. DRAWINGS FOR PLANNING PURPOSES ONLY.
 2. FIGURED DIMENSIONS ONLY TO BE TAKEN FROM THIS DRAWING.
 3. GRID REFERENCES TO IRISH NATIONAL GRID.
 4. ALL LEVELS SHOWN RELATE TO ORDNANCE SURVEY DATUM AT MALIN HEAD

Rev	Date	Description	By	Chkd.
A	22.03.23	PLANNING ISSUE	EB	MN

Client:
Bord na Móna

Project:
OWENINNY WIND FARM PHASE 3

Title:
PROPOSED TSO & IPP SUBSTATION - ELEVATIONS

Scale @ A1: **1:250**

Prepared by: **E. Beggs** Checked: **M. Nolan** Date: **February 23**

Project Director: **B. Gallagher**

Drawing Status: **Planning**

TOBIN
CONSULTING ENGINEERS

Block 10-4, Blanchardstown Corporate Park,
Dublin 15, Ireland.
tel: +353-(0)1-8030406
fax: +353-(0)1-8030409
e-mail: dublin@tobin.ie
www.tobin.ie

Drawing No.: **10889-2016** Revision: **A**